

# TRIPLE DOUBLE GUARANTEE™

DOUBLE THE LINING LIFE OR YOUR NEXT SET IS FREE\*

## WHY THE TRIPLE DOUBLE GUARANTEE? DRUM BRAKES STILL MATTER.

If Reduced Stopping Distance (RSD) matters for new heavy-duty trucks and trailers, it matters even more for *older* equipment still rolling down the highways, back roads and city streets.

*Truth is, S-cam foundation brakes account for the vast majority of brake systems still in service today.* While buying new vehicles equipped with disc brakes might seem like the obvious solution, it certainly is not a practical one. There is an easier, more affordable option, and it begins by upgrading your worn, weakened, and warped pressed-steel cores.

## THE REAL MUSCLE BEHIND OUR TRIPLE DOUBLE GUARANTEE.

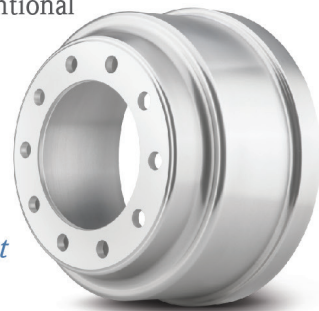
You see, once you reline a pressed-steel core, you compromise its structural integrity. Forever. Weakening it more and more with each subsequent relining. So we decided to do something about it and developed *Matrix NeoCast™* – the world's first lightweight cast iron brake shoe. It's as light as pressed-steel, yet still packs the unflinching stopping power of old-school cast iron. Throw on our cohesive friction blocks, and you've got better-than-OE-brakes.



## TAKE ADVANTAGE OF OUR TRIPLE DOUBLE GUARANTEE. AND MAYBE US.

When you purchase and install our exclusive *Matrix NeoCast brake shoes*, lined with our advanced performance *NB1088™ cohesive friction blocks*, plus our extraordinary one-piece, machine-balanced *Matrix Revolution™ (MR 360) drums*, we guarantee twice the service life of our *NB1088 (RSD) linings* over your currently installed conventional linings, ***or we will replace them at no cost\* and install them on the cores of your choice.***

*\*Must provide documented proof of maintenance intervals for currently installed linings on your trucks and tractor-trailers at time of purchase to qualify for free replacement. Offer valid against competitor brake materials in first-time-installations only.*



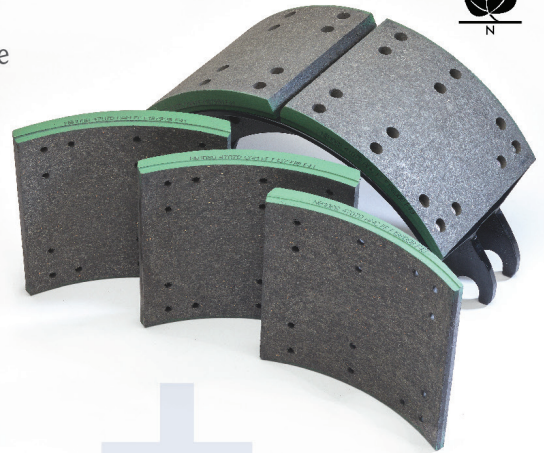
# THE ULTIMATE COMBINATION OF POWER, PERFORMANCE & PEACE OF MIND.

When you combine leading edge lining and braking components, you get unprecedented stopping power and performance. Stopping power no modern heavy-duty S-cam brake system has offered before – plus double component life with the *Triple Double Guarantee™*.



## NB1088™ COHESIVE FRICTION (RSD) ADVANTAGES:

- Offers the ultimate non-abrasive, asbestos-free formula
- Creates friction without damaging drums and excessive heat
- Eliminates drum hot spotting and thermal cracking
- Provides quiet, no-brake-squeal operation
- Reduces uneven tire wear
- Excels in Transit (26,000 lb.) and OTR (23,000 lb.) applications
- Achieves unprecedented maintenance and replacement intervals



*Matrix NeoCast™* is the world's first lightweight cast iron brake shoe, and it weighs as light as a conventional pressed-steel core. Only the power, performance and safety benefits far exceed them.

## EXCLUSIVE MATRIX NEOCAST ADVANTAGES:

- Sustains maximum torque through each relining
- Eliminates table flex, web stretch and broken welds
- Maintains constant flush lining-to-drum contact
- Dissipates heat dramatically better than pressed-steel
- Requires up to half of the system air pressure to engage
- Resists rusts 2-3x longer than pressed-steel
- Achieves unprecedented maintenance and replacement intervals



*Matrix Revolution™ (MR 360)* is a performance-grade, machine-balanced drum made of pure virgin ore. It's machined inside and out for uniform wall thickness and a litany of subsequent benefits.

## MATRIX REVOLUTION ADVANTAGES:

- Rolls true from the factory – no balance cuts or weld-on weights
- Expands and contracts uniformly during operation
- Reduces brake judder and vibration; operator stress
- Distributes heat evenly; operates at lower temperature
- Resists heat cracking from “hot spots”
- Achieves unprecedented maintenance and replacement intervals

